

Impact Report 2010–2020

The Origin Energy Foundation believes in the power of education to help transform lives and improve communities. Over the past 10 years the Foundation has provided \$22M of financial support to 26 organisations who positively impact students and teachers in early education, primary schools, senior schools and universities.

This report highlights the impact of these 26 partner organisations. It also sheds light on the philanthropy practised by the Origin Energy Foundation.*

Students supported

62,725

Children and young people have been positively impacted

Students supported

Age Group	Number	% of Total
Early Education	6,286	10
Primary School	16,692	27
Senior School	39,097	62
University	650	1
	62,725	100

Three areas of focus in education

Greater gender diversity in 'STEM'
(science, technology, engineering and maths)

19%

Equality of educational opportunity
for Indigenous students

28%

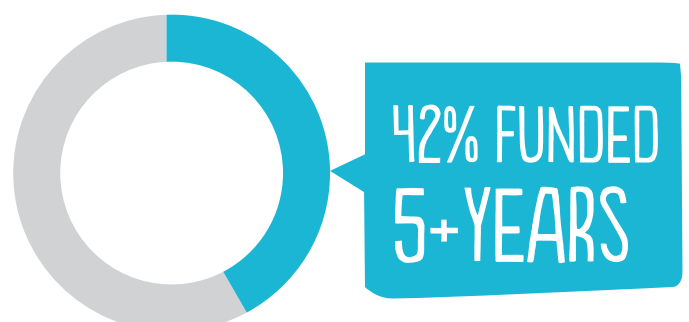
Equality of educational opportunity
for children in rural and regional Australia

53%

% of grant distribution

Long-term giving

Origin Energy Foundation is a long-term funder. On average, programs are supported for 4.4 years and 42% of programs have been funded for five or more years.



The Grant Program

The Grant Program principally supports students in early education settings (under five years old), primary schools (5–11 years old), senior schools (11–17 years old) and universities (17+ years).

The Grant Program also supports primary and senior school educators, as teachers have a significant influence on young people's educational success. Over the past 10 years, more than **2,924** teachers have benefited.



of the programs delivered by partner organisations engage **Indigenous** students to gain the skills, opportunities, belief and confidence to succeed at school and university.



of all programs delivered by partner organisations are delivered in **rural and remote communities**.



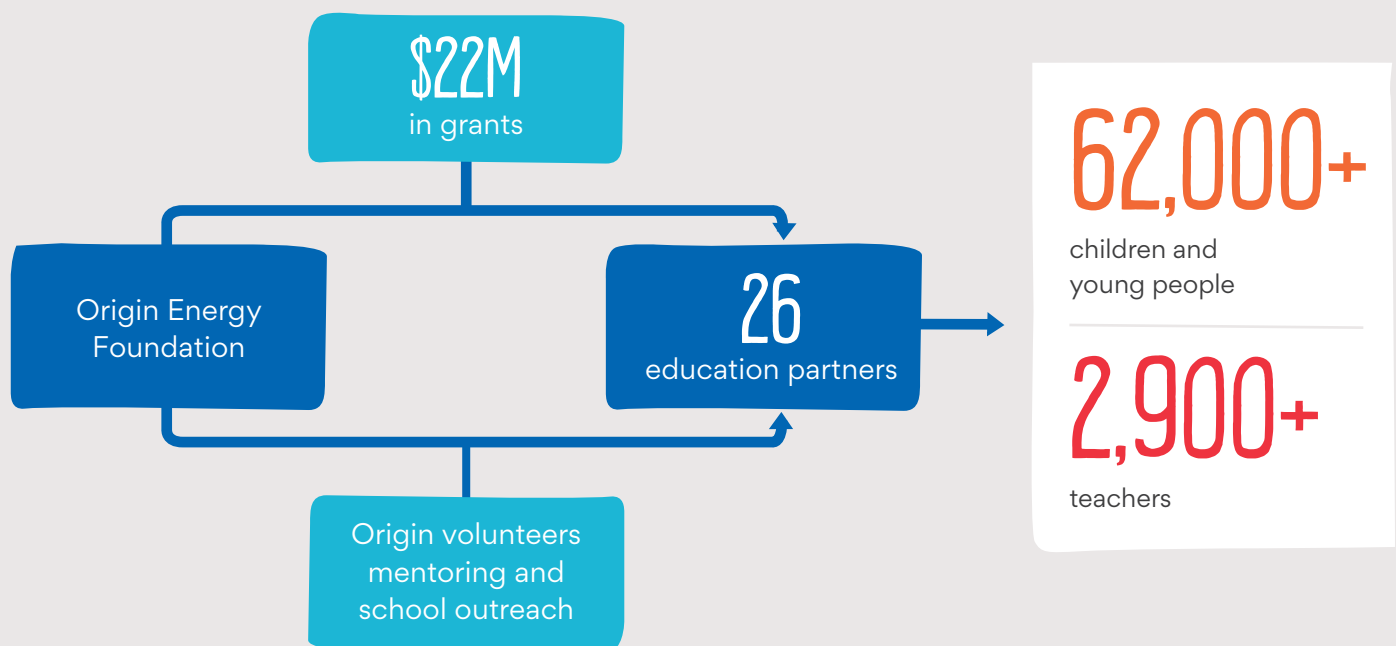
of programs delivered by partner organisations run across Australia in **multiple States and Territories**, with an emphasis on rural and regional areas.



of the **teachers** we support work in **rural and regional** Australia.

Engaged philanthropy

Origin Energy Foundation has an engaged philanthropy model which fosters active partnerships based on giving financial support and facilitating Origin employees to volunteer their time and expertise.



*This publication contains general information only. The report describes self-reported data provided by 26 organisations supported by Origin Energy Foundation between 2010 and 2019. The data received from organisations has not been verified, therefore participant numbers in each program may include estimates. Please see www.originfoundation.org.au to learn more about our work and impact.